

WASH in Nutrition

*Strategies and Operational Solutions to fight
Undernutrition with Water, Sanitation and Hygiene*

Stockholm World Water Week
August 25th 2015

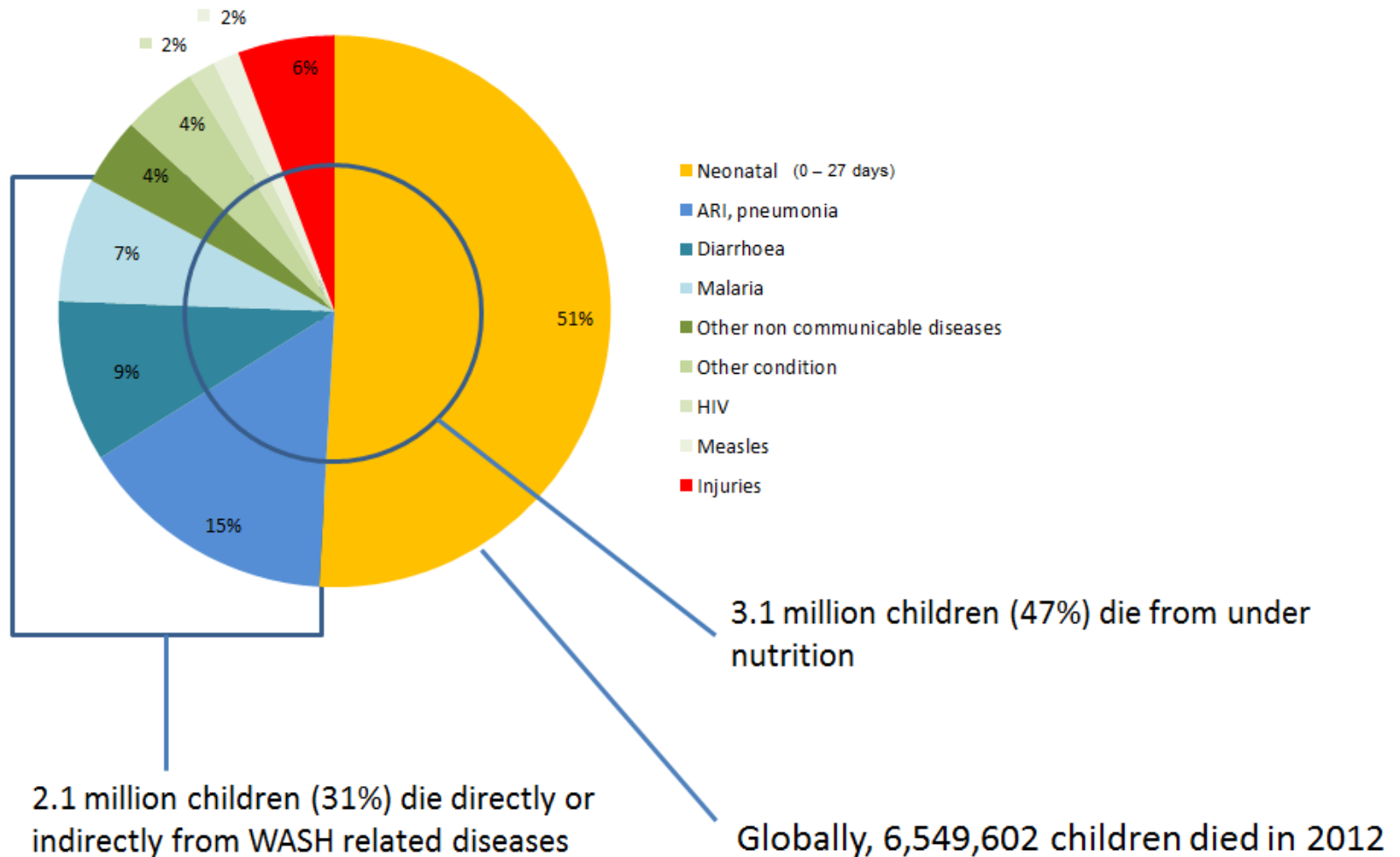
Nutrition Framework

(USAID, 2013)



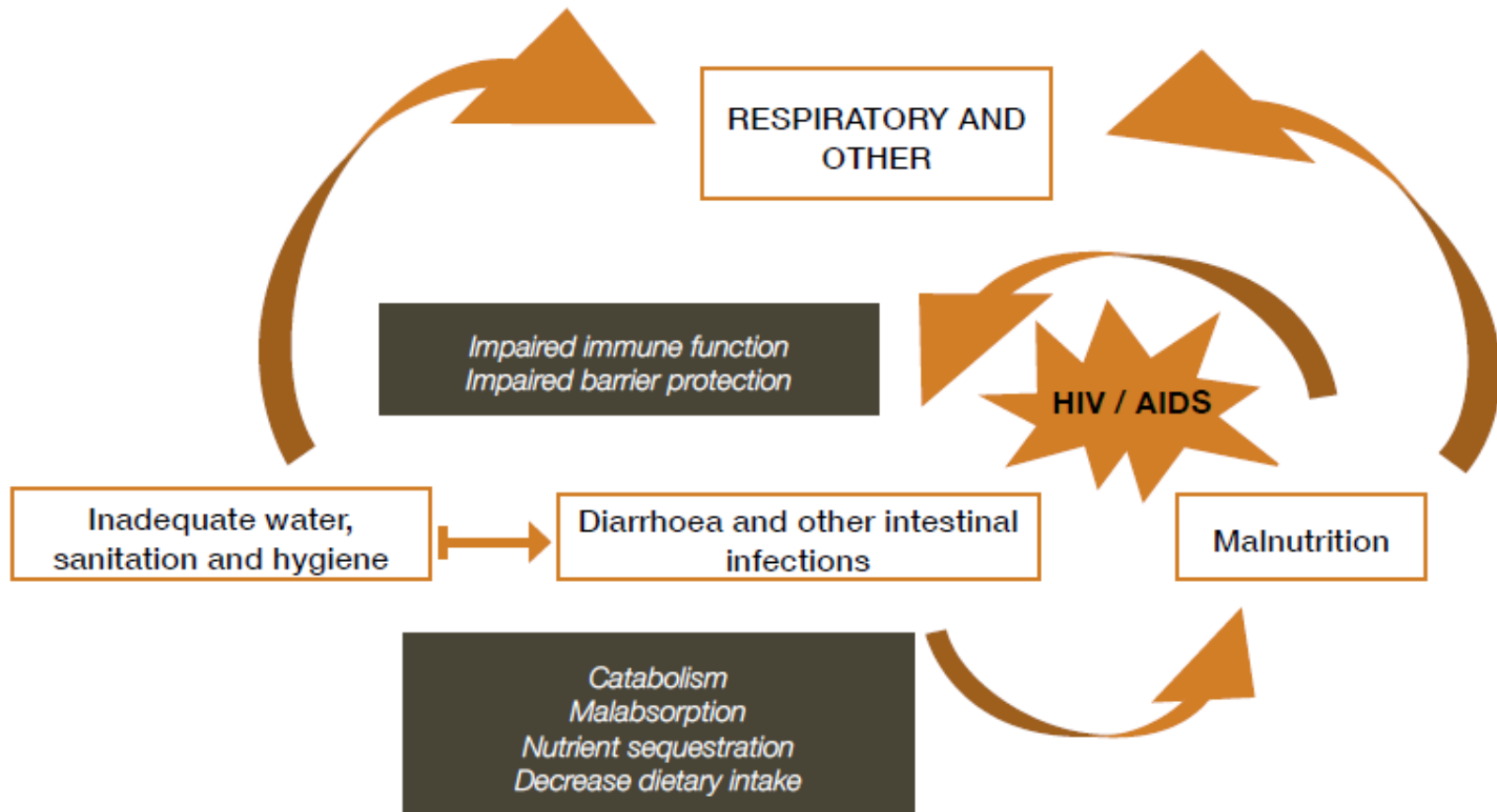
Under 5 Mortality

(WHO 2014)



The Vicious Cycle

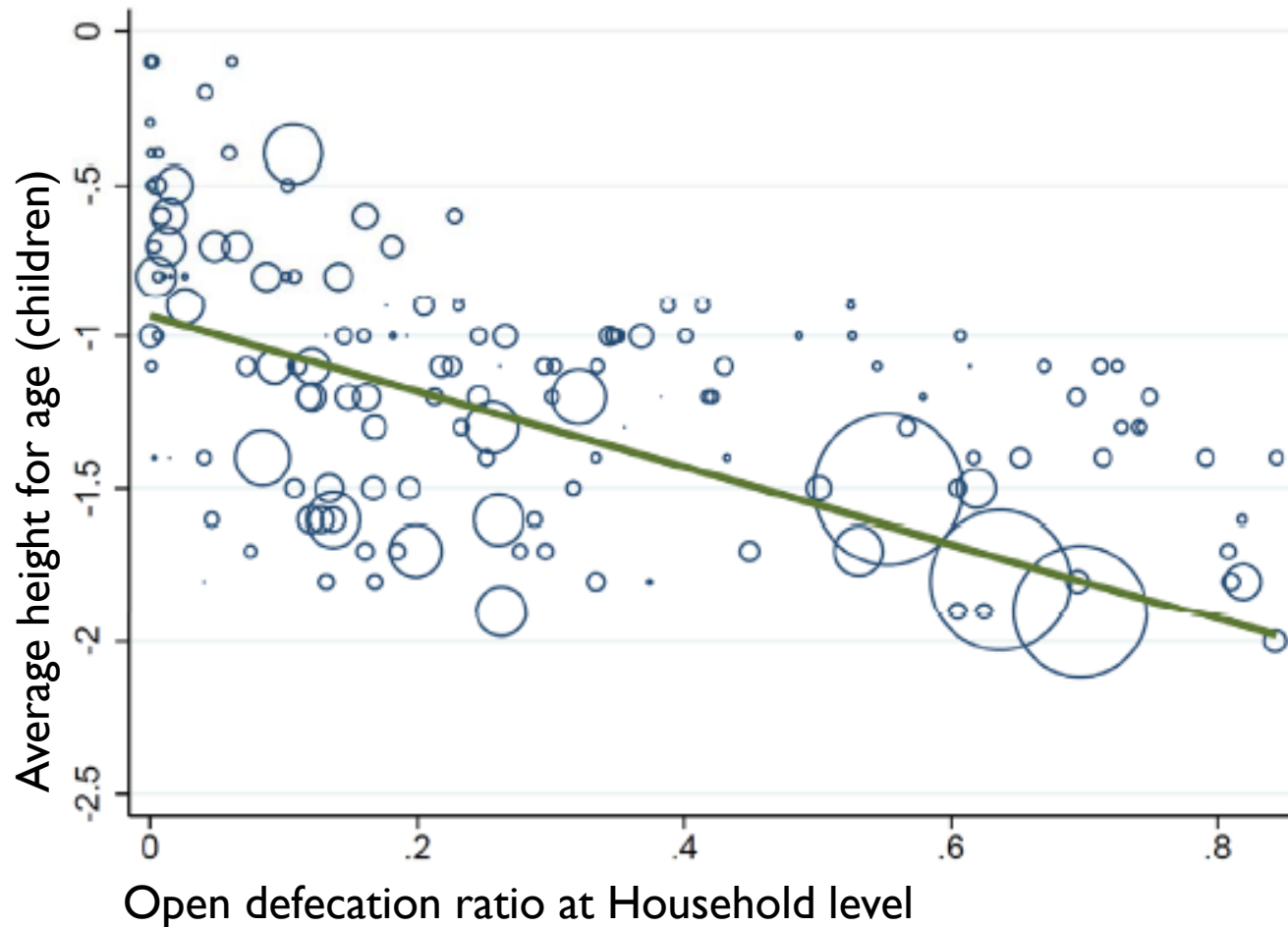
(WHO, 2007)



WASH impacts Nutritional Status

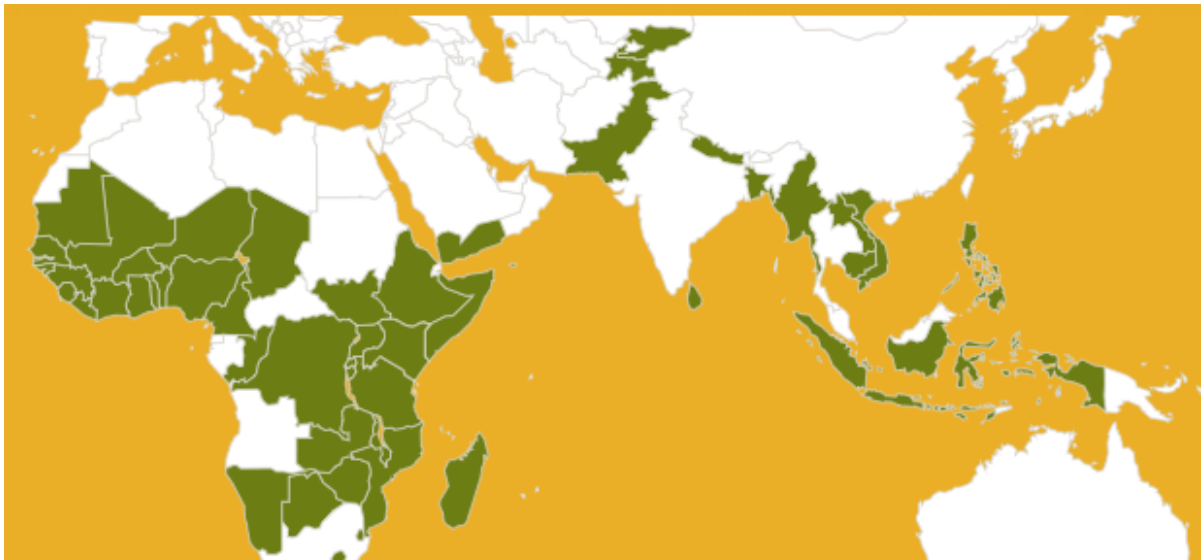
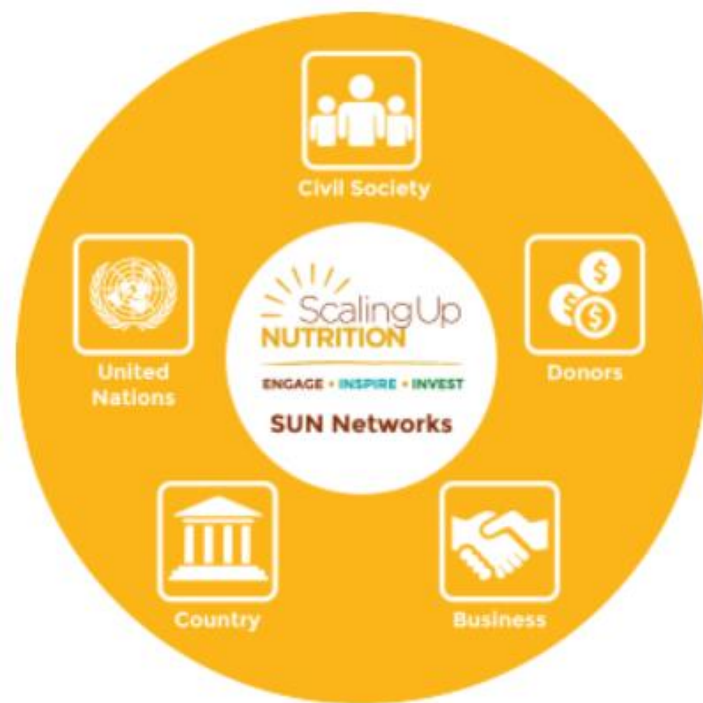
(Spears, India, 2012)

Sanitation affects stunting



The SUN Movement (2009)

55 countries engaged



Objectives are:

- **Engage and Inspire**
- **Share** experience on scaling up nutrition through a **multisector approach**
- **Invest**
- **Support** (enable other Networks and the SUN Movement Secretariat to engage in issues that cannot be addressed in-country).

Session Structure

1 - Where are we? *Panel presentations*

- 1. Research**
- 2. Policy Strategy and Advocacy**
- 3. Operational Approach and Technical Implementation**

2 - Where do we want to go? *Group work*

- Develop three key recommendations per group

3 - Sharing/agreement on recommendations

4 - Closing and way forward

Where are we?

I. Research

Oliver Cumming

Lecturer

Environmental Health Group

London School of Hygiene and Tropical Medicine

Where are we?

2. Policy, strategy and advocacy

(a)

Christiane Hieronymus

Head of Division

Special Initiative “One World No Hunger”

German Federal Ministry for Economic
Cooperation and Development

Where are we?

2. Policy, strategy and advocacy

(b)

Dr. Francois Lompo

Minister of Agriculture, Water Resources,
Sanitation and Food Security

Burkina Faso

Where are we?

3. Operational approach and technical implementation

Claire Gaillardou

Technical WASH Advisor for West Africa
Action Contre la Faim (ACF)

Where do we want to go?

Three groups (20min):

1. Research

Joanne Esteves Mills, LSHTM / SHARE

2. Policy, strategy and advocacy

Ajay Paul, German WASH Network / Welthungerhilfe

3. Operational approach and technical implementation

Joanne Smyth, Concern Worldwide

Objective:

Develop three key recommendations per group and provide flipchart

Groups	Recommendations
Research	Prioritising and understand what interventions are cost effective. What to focus on and at what scale. And the magnitude of the effect and WASH on acute malnutrition.
	How to measure nutrition and WASH+ better consistency in measurement tools Whether to measure health outcomes, behaviours or parasitic prevalence.
	What the enabling factors which make interventions work in practice. Note: better dissemination of findings to policy and operations for adoption.
Policy & Strategy	Funding the gaps: provide support and invest in modelling intervention packages and evidence based research with potential to be scaled up within capabilities of governments and institutions
	Global Policy: SUN to integrate and budget for the integration process
	Two way integration: concrete representation of sector experts in high level sector meetings and the sectoral debate. Consideration of the sectoral integration not only in policies and strategies but also in Call for Proposals
Operational / Technical	Ensuring that WASH and nutrition projects include a Behaviour Change strategy (consider targeting and importance of integrated assessment stage)
	Emphasis on health system strengthening for sustainability, focus on engage and training of health practitioners
	Consider integrated analysis of both WASH and nutrition value chains to support

Thanks

- Please register on the session mailing list / mapping form
- Please join **SuSanA Working Group I2 meeting (today, 2PM, room 353)**
- Or become a member on <http://www.susana.org>
- References – available on SuSanA website
- Further steps: Bonn Conference, World Toilet Day, Operational manual WASH in Nut
- Further contacts on the subject:
 - ACF: Claire Gaillardou cgaillardou@actioncontrelafaim.org
 - GTO: Robert Gensch robert.gensch@germantoilet.org